



The Essence of
Premium
Lifestyle



An exclusive boutique apartment project in Raghunathpur, Bhubaneswar.
Approved by BDA and registered under ORERA.

Building a Legacy of *Excellence* and Trust

For over 15 years, Adilaksmi Construction has been at the forefront of quality and innovation in the real estate industry. With every project, we bring to life a commitment to exceptional design, sustainable practices, and uncompromising quality. Crystal is the latest in our line of exclusive project, setting a new standard for boutique luxury living.



Crystal: The Perfect Fusion of Location, Luxury, and Lifestyle

Crystal is more than just a place to live – it's an experience. Located in the vibrant neighbourhood of Raghunathpur, Crystal offers an unparalleled living experience with close proximity to city essentials, including hospitals, schools, and Lalchand Jewellers as a prominent landmark.

- ▶ Approved by BDA and ORERA-registered, ensuring transparency and quality.
- ▶ Location advantage: Connected to essential services and vibrant community areas.

Distance from Crystal

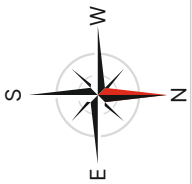
• Patia Square	3.9 KM
• KIIT International School	4.5 KM
• KIMS Hospital	4.7 KM
• KIIT (Deemed University)	5 KM
• Sai International School	5.2 KM
• Infocity Square	6 KM
• Nandankanan Zoo	4.6 KM
• DAV School	7 KM
• Kalinga Hospital	7.4 KM
• Appolo Hospital	9.5 KM
• Railway Station	14.2 KM
• Airport	15 KM

Scan for the Location



Project Registration Number-
RP/19/2024/01280.

STILT FLOOR PLAN



37270

33270

3.98 M WIDE DRIVEWAY

3.5 M WIDE DRIVEWAY

3.5 M WIDE DRIVEWAY

2000

20860

2000

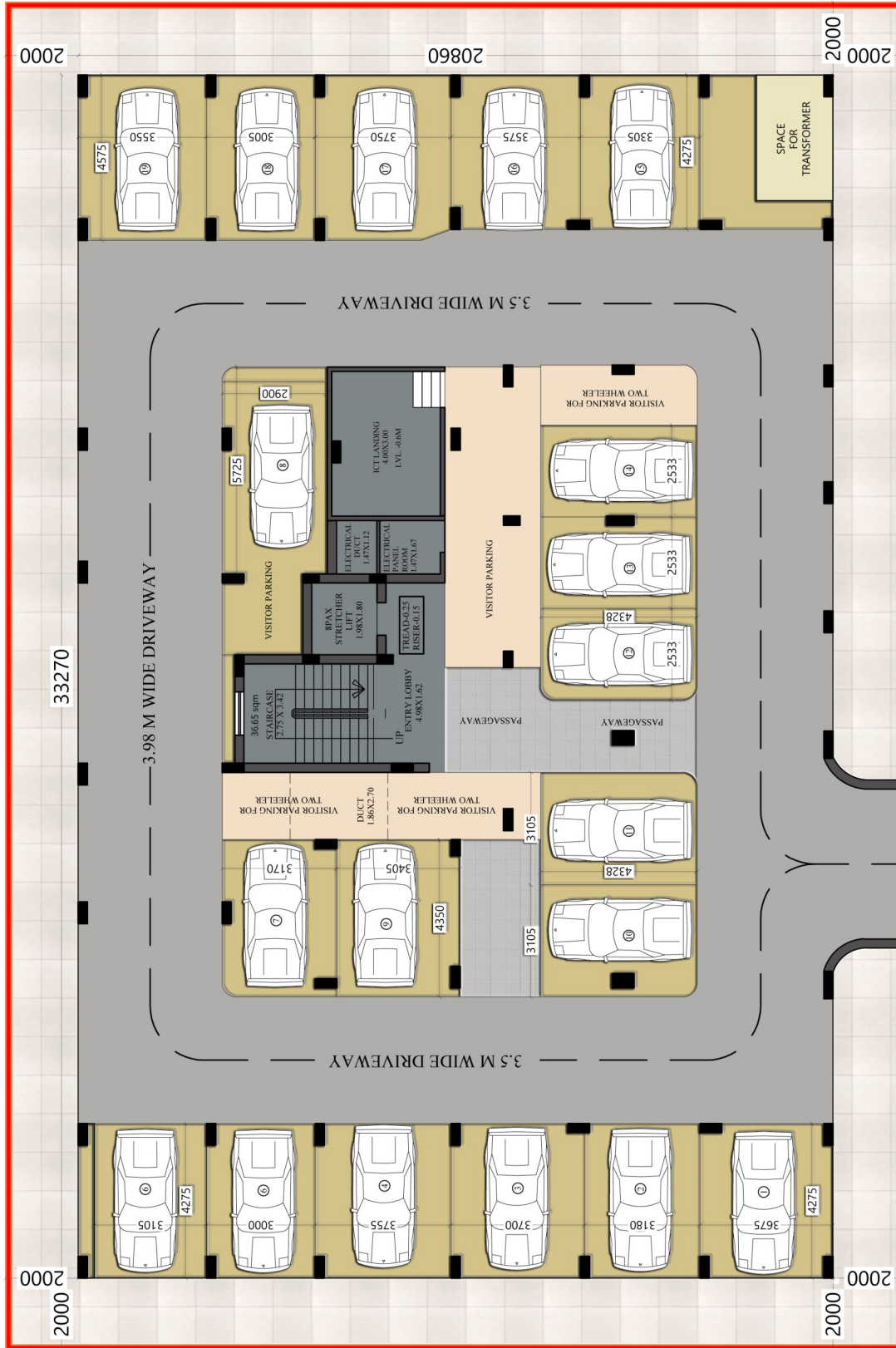
24860

2000

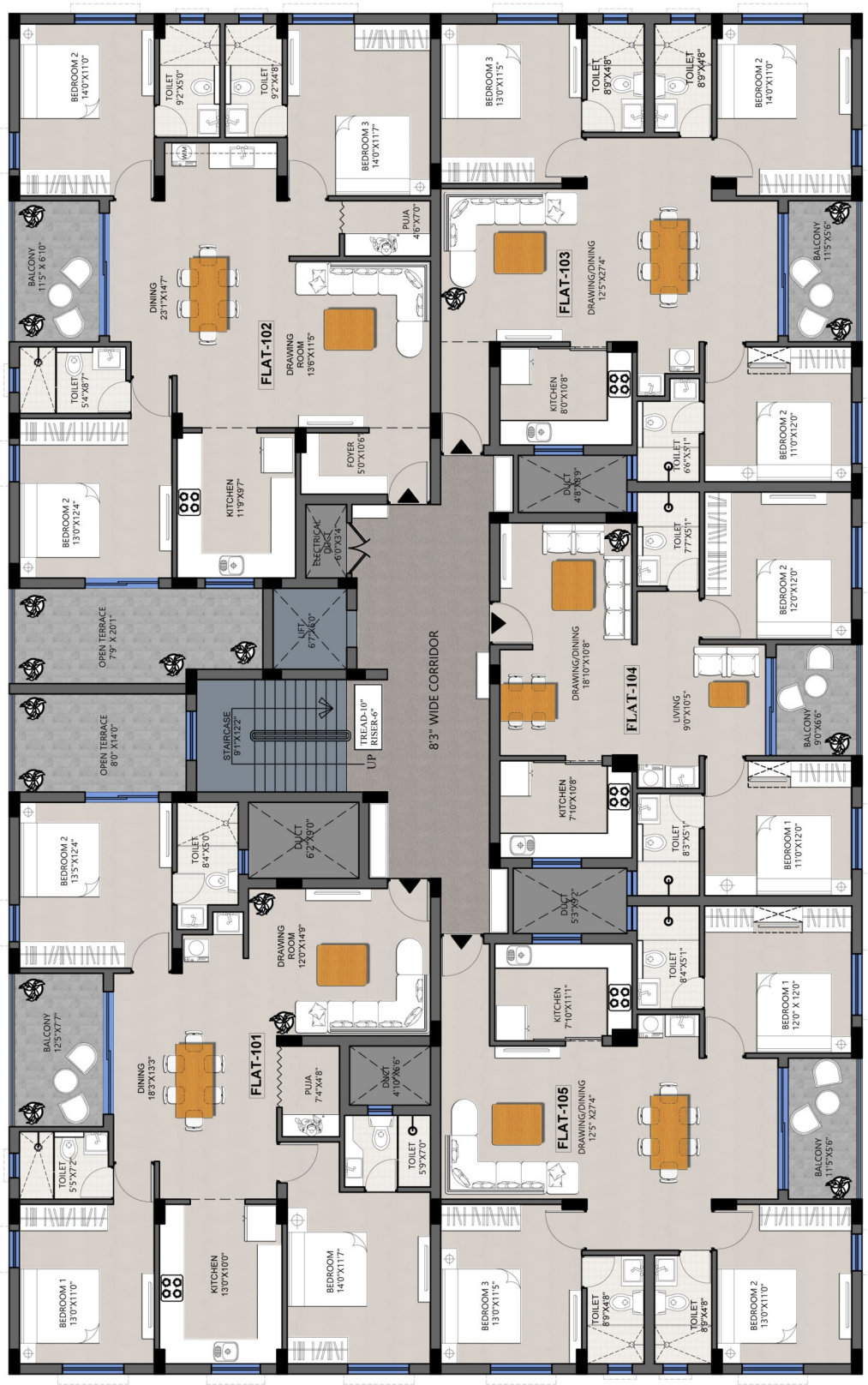
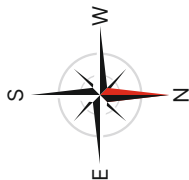
2000

(East - 30 ft Wide Road)

(North - 30 ft Wide Road)



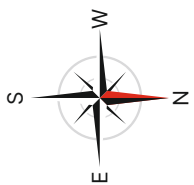
FIRST FLOOR PLAN



(East - 30 ft Wide Road)

(North - 30 ft Wide Road)

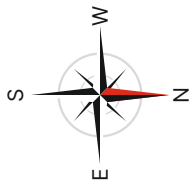
SECOND & THIRD FLOOR PLAN



(East - 30 ft Wide Road)

(North - 30 ft Wide Road)

FOURTH FLOOR PLAN



(East - 30 ft Wide Road)

(North - 30 ft Wide Road)

AREA DESCRIPTION

FIRST FLOOR

FLAT NO.	B.U.A AREA (ORERA)	CARPET AREA (ORERA)	BALCONY AREA (ORERA)	TERRACE AREA (ORERA)	SUPER B.U.A
101(3BHK)	1581 sqft	1193 sqft	93 sqft	112 sqft	1798 sqft
102(3BHK)	1664 sqft	1261 sqft	82 sqft	149 sqft	1892 sqft
103(3BHK)	1260 sqft	1045 sqft	67 sqft		1432 sqft
104(2BHK)	942 sqft	764 sqft	62sqft		1071sqft
105(3BHK)	1262 sqft	1051 sqft	67 sqft		1435 sqft

SECOND & THIRD FLOOR

FLAT NO.	B.U.A AREA (ORERA)	CARPET AREA (ORERA)	BALCONY AREA (ORERA)	TERRACE AREA (ORERA)	SUPER B.U.A
201/301 (3BHK)	1463 sqft	1193 sqft	93 sqft		1664 sqft
202/302 (3BHK)	1509 sqft	1261 sqft	82 sqft		1716 sqft
203/303 (3BHK)	1260 sqft	1045 sqft	67 sqft		1432 sqft
204/304 (2BHK)	942 sqft	764 sqft	62sqft		1071 sqft
205/305 (3BHK)	1262 sqft	1051 sqft	67 sqft		1435 sqft

FOURTH FLOOR

FLAT NO.	B.U.A AREA (ORERA)	CARPET AREA (ORERA)	BALCONY AREA (ORERA)	TERRACE AREA (ORERA)	SUPER B.U.A
401(3BHK)	1463 sqft	1193 sqft	93 sqft		1664 sqft
402(3BHK)	1509 sqft	1261 sqft	82 sqft		1716 sqft
403(3BHK)	1315 sqft	1095 sqft	67 sqft		1495 sqft
405(3BHK)	1660 sqft	1233 sqft	73 sqft	164 sqft	1888 sqft



ADIILAKSMI CONSTRUCTION PVT LTD.

📍 PLOT NO- 663 & 665 ,AT- BHIMPUR, PO- PAHALA P.S- PAHALA, NAKHARA, BHUBANESWAR, Odisha, India - 751032

☎ +91 99370 23365, +91 998610 53338

✉ info@adiilaksmi.com